

synfo.com

hosted by



the complete superyacht news and information source

Subscribe and receive
10 issues of The Yacht Report,
plus get access to all areas on synfo

[SUBSCRIBE](#)
Search:



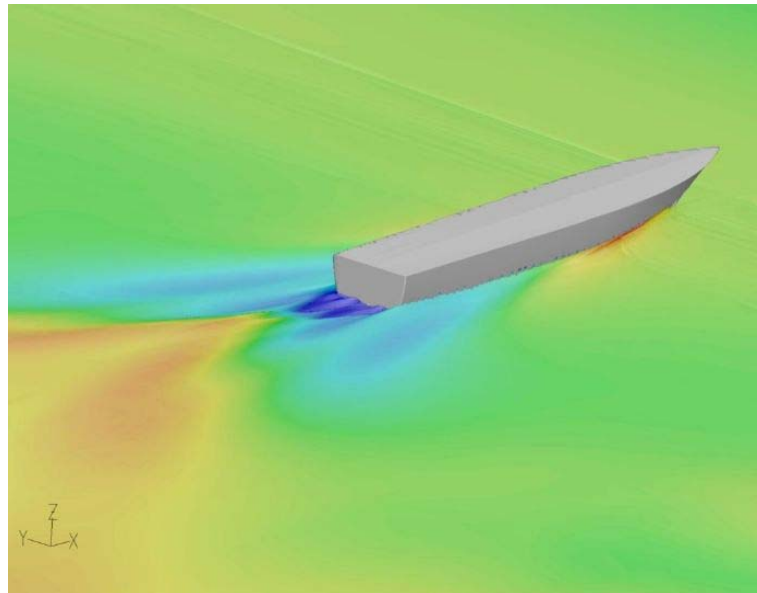
Fleet News

[<< return to all news page](#)

[Send news article to a friend](#)

03 June 2009 - The 50m Aifos designed using Hydro-Tec

The next yacht scheduled for delivery that has benefited from Hydro Tec-designing is the *Aifos*, a 50m vessel made from aluminium and currently under construction in the CBI Navi shipyard. *Aifos* is a semi-displacement, tri-deck superyacht, currently being built by CBI Navi according to Sergio Cutolo's Hydro Tec technical design. The exterior styling and design and the interior design are by Giorgio Vafiadis & Associates.



The yacht is classified by DNV and complies with MCA regulations, with its hull and structure made from a light 5083-aluminium alloy giving the boat a displacement of 200 tonnes. *Aifos* has a semi-displacement planing hull with propellers housed in semi-tunnels. This is designed to make the vessel easier to steer, with reduced draft and better boat stability (even at high speeds). Features such as the keel (which was tested in the Krylov sea basin in St. Petersburg) have been designed to maximise the speed potential of the yacht, in addition to delivering more efficient fuel consumption/speed ratio, even at low speeds.

She comes equipped with two MTU 16V 4000 M93 engines, that generate 2,720 kW each and give a maximum speed of 24 knots. In terms of range possible before the need to refuel, the *Aifos* can travel 700 miles at 22 knots and 1800 miles at 12 knots and also has a dynamic stabilisation system, made up of four stabilising, non-retractile fins with mechanical actuator. She can provide accommodation for 12 guests in six cabins, with three VIP double cabins on the lower deck, two twin cabins on the main deck, one large full beam suite on the upper deck (sliding doors connect this cabin with the living room), thus giving the ship owner a lot of room.

Adam Turner

Related Links

[Hydro Tec - company website](#)
[CBI Navi Shipyard - company website](#)


All news items used from this site must include full credit to Synfo.com

Synfo sponsored links

Satellite Communication

Livewire Connections Access Controller FB-10 provides total control of your VSAT, Fleet, FBB, OpenPort, 3G, WiFi & more...

Livewire Connections Ltd

[company details](#) / www.livewire-connections.com

Crew

Highly Successful, International Company undergoing Rapid Global Expansion offering Shore-based Business Opportunities to Motivated Entrepreneurs. Earn Executive-Level income working from home in English and/or Spanish. No travel necessary. No previous experience required. Full training and support given.

Life Changes

[company details](#) / www.life-changes.biz

Shore Power Convertors

ASEA POWER SYSTEMS is the Marine Industry Leader for Shore Power Conversion equipment ranging in power from 8kVA - 1000kVa.

ASEA POWER SYSTEMS

[company details](#) / www.aseapower.com

Satellite Communication

e3 Systems Group, advanced electronics provision through its Core3 Life Time Service: from concept to construction and cruising; covering Communications, Networks and IT, Music and Movies, Navigation, and Safety and Security. VSAT specialists and award winning communications service providers.

e3 SYSTEMS - Palma - Head Office

[company details](#) / www.e3s.com

IT Services

OmniAccess S.L - IT NETWORK DESIGN - VSAT SERVICE Yacht Internet Connectivity: design, implementation, management. Flexible VSAT service terms

OmniAccess S.L

[company details](#) / www.omniaccess.com

Shipyards - Refit; Shipyards - New Build

Pendennis, one of the World's leading dedicated refit & repair facilities for Superyachts.

Pendennis

[company details](#) / www.pendennis.com

Software

SpecTec provides the yachting industry with easy-to-use software applications for efficient vessel management. Our IDEA software suite is installed on approx. 400 large yachts to date, where it serves as a dependable solution for the various onboard technical and administrative management requirements.

SpecTec GmbH

[company details](#) / www.idea.spectec.net

AV & Entertainment

Van Berge Henegouwen specializes in the installation & integration of comfort electronics on board luxury private superyachts

van Berge Henegouwen Installaties

[company details](#) / www.bergehenegouwen.com

[Advertise](#) | [Terms & Conditions](#)

To include your sponsored link , please [contact us](#)

© Synfo.com – Superyacht News and Information